

**Goyang Oulim Nuri
Arts Complex
TECHNICAL SPECIFICATIONS**

2020. 02. 14

Stage Management Team

Oulim Theater

TECHNICAL SPECIFICATIONS

SEATING CAPACITY

ORCHESTRA	899
SECOND BALCONY	305
THE DISABLED SEAT	14
TOTAL	1218
ORCHESTRA PIT SEPARATELY	72

STAGE DIMENSIONS

PROSCENIUM

WIDTH	19.2m
HEIGHT	10.3m

STAGE

TOTAL DEPTH	35.4m
WIDTH	54m
MAIN STAGE DIMENSIONS	19.2m(W) x 15m(D)

WINGS

SL PROSCENIUM EDGE TO SL WALL	20 m
SR PROSCENIUM EDGE TO SR WALL	20 m

GRID

GRID HEIGHT TO DECK	30m
GRID HEAVILY OBSTRUCTED WITH HOUSE LINESET RIGGING	
MAX BATTEN "OUT" HEIGHT	24m
HOUSE FIRST CEILING (1 ceiling)	14.8m
HOUSE SECOND CEILING (2 ceiling)	6m

ORCHESTRA PIT

Use of fixed seats.

MAIN STAGE LIFT

Each main stage in the 15m(L) x 5m(D) the size of the lift is 3, 3 lifts fall directly connected to another room and underground equipment and fittings, and three segments of the switching behavior of the individual and the group' s director of shows the diversity. In addition 3 lifts, 18 is divided into two pieces 5m(L) x 2.5m(D) by up to 1m shares to rise until the second stage, the stage can be used as the structure of various types. (speed adjustable)

SIDE WAGON

Right and left on the stage, each the same size as main stage [15m(L) x 5m(D)]=6EA, 3 bird price, and

Allowing a perfect motive driving two or three units can be used in conjunction. Week arrival time becomes the stage takes 50 seconds. (speed adjustable)

REAR WAGON

On stage after 15m(L) x 15m(D) in size and location to mount the revolving stage, the stage, ranging from various forms of this stage of the structure can be used. (speed adjustable)

TURN TABLE

Go back to the stage where the size was 14ø at 360° degrees 50 seconds to reload.

(speed adjustable)

CARPENTRY

STAGE FLOOR

Constructed in compressed dried beech flooring and the color is black. The compressed level is 510Kg/Cm².

PLATFORMS

RECTANGULAR PLATFORMS

SIZE	EA
(30cm x 90cm)	20
(30cm x 120cm)	20
(30cm x 180cm)	20
(60cm x 90cm)	20

(60cm x 120cm) 20
(60cm x 180cm) 20
(60cm x 270cm) 10
(90cm x 90cm) 10
(90cm x 120cm) 10
(90cm x 180cm) 30
(90cm x 270cm) 30
(90cm x 360cm) 10
(120cm x 120cm) 10
(120cm x 180cm) 20
(120cm x 270cm) 10
(120cm x 360cm) 10
(180cm x 180cm) 10
(180cm x 270cm) 15
(180cm x 360cm) 10

SLIDING PLATFORMS

(180cm x 270m) 2
(180cm x 360m) 2

BLOCKS

(30cm x 45cm) 200

STAIR

(28cm x 30 x 88cm) 2
(15cm x 30 x 90cm) 2
(15cm x 30 x 90cm) 2

ACCESSORIES

Clamp(≡ type) 200

Clamp(≡ type) 100

SOFT GOOD INVENTORY

DRAW CURTAIN Pair black cotton velour 23.3m(L) x 12m(H) (6) – Fix

BORDERS Pair black cotton velour 22m(L) x 2.5m(H) (6)

SCRIMS Black scrim 21.3m(L) x 12m(H) (1)

White scrim 21.3m(L) x 12m(H) (1)

HORIZONTAL CURTAINS

Black 28m(L) x 12m(H) (1)

White 28m(L) x 12m(H) (1)

SCREENS

REAR SCREEN 20.5m(L) x 10m(H) (1)

SET BATTEN

A total of 28 (# 0, Rear Screen) device hangers are set. The spacing is set at 250mm and the load is adjusted at 1,000kg in the stage machine control room (2nd floor of sewage).

.

PROPS

PIANO

Steinway D-274 grand piano 1ea

Yamaha D-7 grand piano 1ea

PIANOS CARRIER

Steinway D-274 ,Yamaha D-7 compatibility carrier 1ea

FOLDING CONDUCTOR'S PODIUM

(1) 1.24m(L) x 1.16m(D) x 0.3m(H)

DIRECTOR'S STAND

(1)

CONTRA BASS CHAIRS

(15)

MUSIC CHAIRS

(160)

MUSIC CHAIRS CARRIER

(10) Carrier holds 10 chairs each.

MUSIC STAND

(80)

MUSIC STAND CARRIER

(8) Carrier holds 20 stands.

MUSIC STAND LIGHT

(95) Black, light 40W, angle control.

DANCE FLOOR

(9) each roll size is 2m(W) x 22m(L). One side is black and other side is gray.

DANCE FLOOR CARRIER

(2) Carrier holds 8 rolls.

DRESS ROOM

LOCKER

All dressing rooms have cardkey auto lock system.

ROOMS

There are 6 dressing rooms on the right side of the stage. All dressing rooms are equipped with private bathrooms and showers.

Floor plans for flooring are attached at the back.

In the No. 1 dressing room shower room, there are drum washing machine (22Kg, 127L) and dryer (14Kg).

SOUND

POWER

For sound only, 3 phase 4 line 350 amps power available. For load in only, 3 phase 100 amps power available in stage Right/Left.

CONTROL CONSOL SYSTEM

F.O.H (1) DIGICO SD5 / 56ch

MAIN SPEAKER SYSTEM

Main Left, Right (16) L-Acoustics KUDO
Main Center (6) L-Acoustics KIVA
SUB Woofer (4) L-Acoustics SB-28
Front Fill (6) Meyer Sound UPM-1P
Main Amplifier (6) L-Acoustics La48
(4) L-Acoustics La24
(1) L-Acoustics La 8
Center Amplifier (1) L-Acoustics La 4
Speaker Controller (2) Dolby Lake

MONITOR SPEAKER SYSTEM

Monitor Speaker (8) L-Acoustics MTD-112b
(4) JBL EON G2
Speaker Controller (2) Lake Mesa
Monitor Amplifier (4) L-Acoustics FP2600

PLAYER & RECORDER SYSTEM

CD Player (1) DN-4500 DUAL
CD Recorder (1) TASCAM CD-RW2000
DVD Recorder (1) Blackmagic Design H.264 Pro Recorder – I MAC

WIRELESS MICROPHONE SYSTEM

Receiver	(8)	Sennheiser EM3532 16ch
Beltpack Transmitter	(16)	SK5212-B
Handheld Transmitter	(10)	SKM5200

INTERCOM SYSTEM

wired intercom	(4)	Clear Com RS-501
wireless intercom	(4)	Clear Com BP-410

REAR PROJECTION SYSTEM

LCD Projector	(1)	Panasonic PT-EX16K
----------------------	-----	--------------------

CCD CAMERA SYSTEM

Center	(1)	Panasonic PTZ Camera
---------------	-----	----------------------

LIGHTING

DIMMERS

TOTAL 672 DIMMERS (ETC)

Dimmer : 586 Circuit / 5Kw

Remote Direct : 82 Circuit / 5Kw

Direct : 4 Circuit / 5Kw

CONTROL CONSOLE

(1) Grand MA3 Light Ver.

LIGHT BATTEN

- (1) BALCONY (16 Circuit, RD 4 Circuit)
- (2) CEILING (36 Circuit, RD 4 Circuit)
- (2) APRON (24 Circuit, RD 2 Circuit)
- (1) TOP LIGHT 1 (56 Circuit, RD 12 Circuit)
- (1) TOP LIGHT 2 (36 Circuit, RD 8 Circuit)
- (1) TOP LIGHT 3 (36 Circuit, RD 8 Circuit)
- (2) BORDER (12 Circuit)
- (2) SUSPENSION LIGHT (24 Circuit, RD 12 Circuit)
- (1) HORIZONTAL LIGHT (16 Circuit)
- (3) REAR ELECTRIC (18 Circuit)
- (2) FRONT SIDE (10 Circuit)

- (2) TORMENTOR (6 Circuit)
- (8) TOWER (4 Circuit)

LADDERS

- (1) WS - 10.4 12.1M(40feet)

LIGHTING INSTRUMENT INVENTORY

Follow Spot Light

- (4) USH10 UFS-2000A 2Kw

Zoom Profile Spot Light

- (48) ADB DN205 10~22' 2Kw

Profile Spot Light

- (116) Source Four 15~30° 750w
- (50) Source Four 25~50° 750w
- (67) Source Four 19° 750w
- (41) Source Four 26° 750w
- (8) Source Four 36° 750w

Fresnel Spot Light

- (96) ADB F201 2Kw

Plano Convex Spot Light

- (10) ADB C201 2Kw

Par Light

- (100) Par Light 64 1Kw
- (150) Par Light 46 250w
- (10) Par Light bank 250w

Moving Light

(12) MAC 2000 profile 1.2Kw

Cyclorama Light

(7) ACP 1004H 4 Lamp 1250w

(176) KOREA (Upper) 500w

(18) KOREA 8 Lamp (Lower) 300w

Strobe Light

(16) Data Flash F-1000, 1.5Kw

UV Light

(4) LT-404F, 400w

Fog Machine

(6) F-100

Hazer

(3) UNIQUE

Dry Ice Machine

(4) AQUA 3300

Fan

(4) Martin DMX AF-1, AF-2

Barn Door

(20) 8 inch ADB Barn Door

Iris

(60) Source Four

(18) ADB DN205

Top Hat

(40) Source Four Standard (5.5inch)

(30) Source Four Zoom (6.5inch)

(40) Source Four Zoom (6.5inch, Half)

(23) Par64 (8inch)

Stand

(10) short stand (10cm)

Boom Stand

(16) boom base

(16) pipe (3M)

(16) pipe (2M)

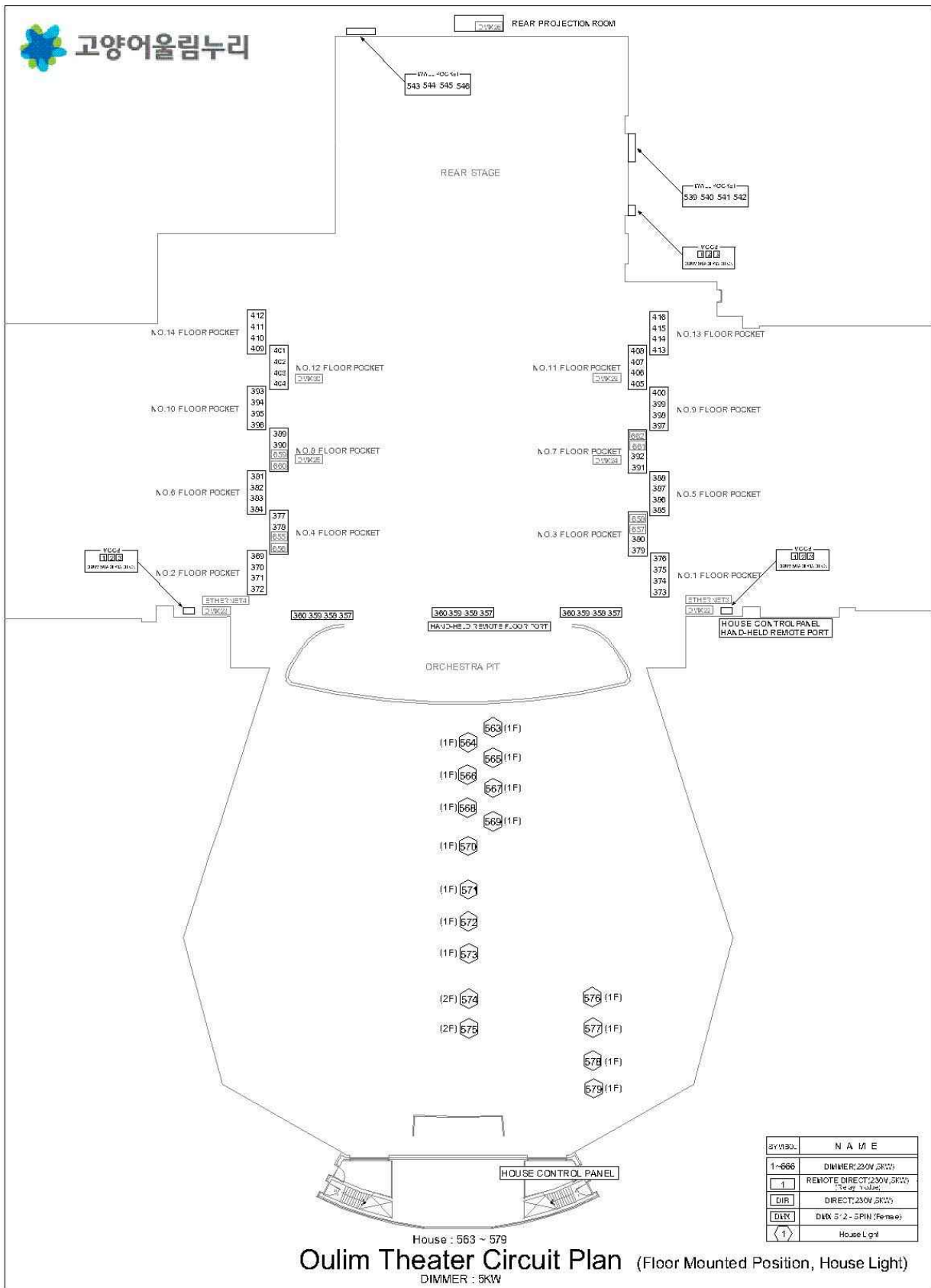
Movable Tower

(2) movable tower 3M

(2) movable tower 1.8M

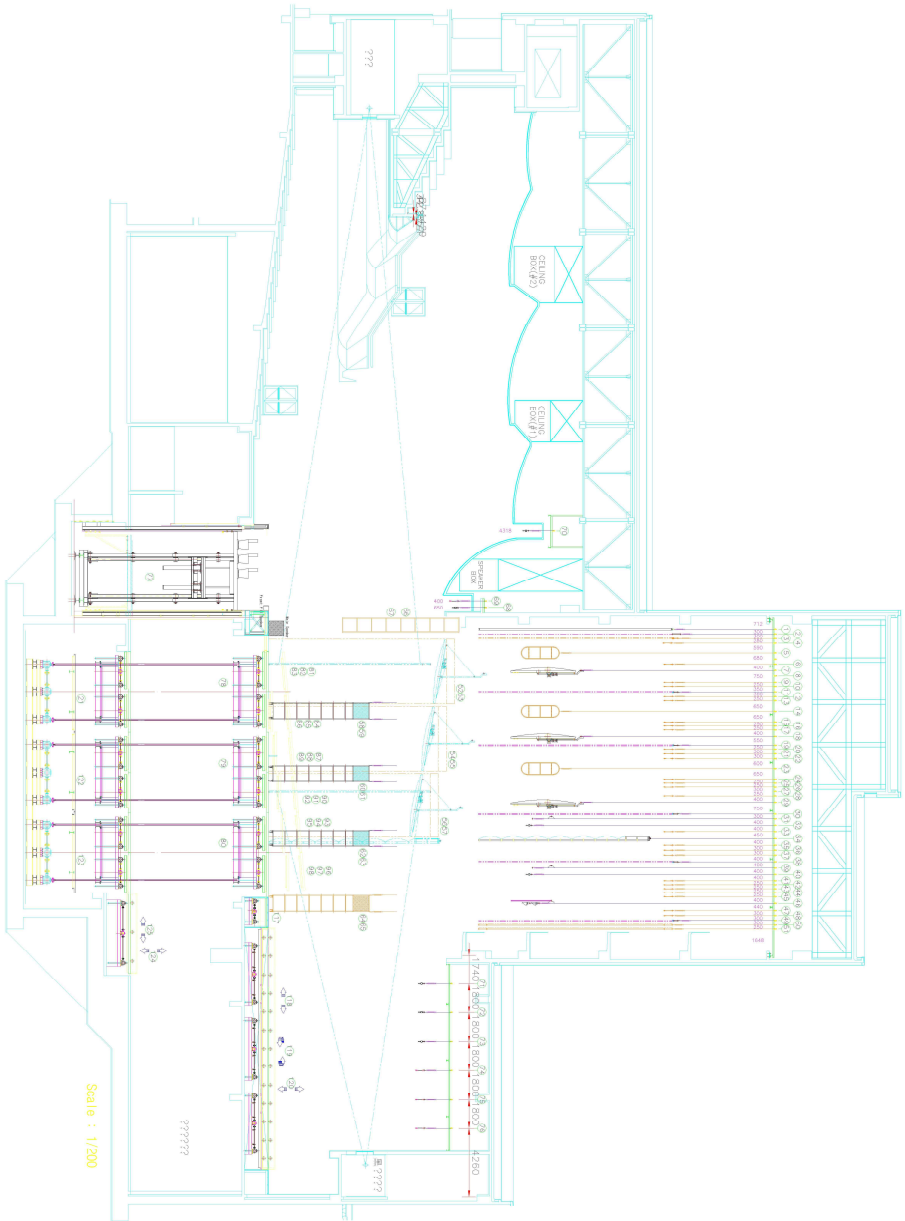


고양어울림누리



SYMBOL	NAME
1-666	DIMMER: 230V, 5KW
[1]	REMOTE DIRECT: 230V, 5KW / 2-SPIN
[DIR]	DIRECT: 230V, 5KW
[DLY]	DLY S' 2 - SPIN / Female
[1]	House Light

House : 563 ~ 579
Oulim Theater Circuit Plan (Floor Mounted Position, House Light)
 DIMMER : 5KW



NO.	DESCRIPTION	NO.	DESCRIPTION
1	SAFETY CURTAIN	46	NO.8 TOWER LIGHT
2	MAIN CURTAIN	47	NO.1 TORNAIL
3	NO.1 DRAW CURTAIN	48	NO.2 TORNAIL
4	NO.2 FLY SET BATTEN	49	NO.1 ABBON LIGHT BATTEN
5	NO.1 TOP LIGHT BRIDGE	50	PLACARD BATTEN
6	NO.1 FLY SET BATTEN	70	NO.2 ABBON LIGHT BATTEN
7	NO.1 UPPER SOUND REFLECTION BOARD	71	NO.1 BACK STAGE SUSPENSION LIGHT BATTEN
8	NO.2 FLY SET BATTEN	72	NO.2 BACK STAGE SUSPENSION LIGHT BATTEN
9	NO.2 FLY SET BATTEN	73	NO.3 BACK STAGE FLY SET BATTEN
10	NO.2 FLY SET BATTEN	74	NO.1 BACK STAGE FLY SET BATTEN
11	NO.3 FLY SET BATTEN	75	NO.2 BACK STAGE FLY SET BATTEN
12	NO.4 FLY SET BATTEN	76	NO.3 BACK STAGE FLY SET BATTEN
13	NO.2 FLY SET BATTEN	77	NO.1
14	NO.2 TOP LIGHT BRIDGE	78	DESCRIPTION
15	NO.2 FLY SET BATTEN	79	ORCHESTRA LIFT
16	NO.7 FLY SET BATTEN	80	STAGE LIFT
17	NO.8 FLY SET BATTEN	81	STAGE LIFT
18	NO.2 UPPER SOUND REFLECTION BOARD	82	SMALL SUEB SINKING & TILING STAGE
19	NO.2 DRAW CURTAIN	83	SMALL SUEB SINKING & TILING STAGE
20	NO.3 FLY SET BATTEN	84	SMALL SUEB SINKING & TILING STAGE
21	NO.10 FLY SET BATTEN	85	SMALL SUEB SINKING & TILING STAGE
22	NO.11 FLY SET BATTEN	86	SMALL SUEB SINKING & TILING STAGE
23	NO.2 TOP LIGHT BRIDGE	87	SMALL SUEB SINKING & TILING STAGE
24	NO.2 FLY SET BATTEN	88	SMALL SUEB SINKING & TILING STAGE
25	NO.2 FLY SET BATTEN	89	SMALL SUEB SINKING & TILING STAGE
26	NO.4 FLY SET BATTEN	90	SMALL SUEB SINKING & TILING STAGE
27	NO.4 FLY SET BATTEN	91	SMALL SUEB SINKING & TILING STAGE
28	NO.15 FLY SET BATTEN	92	SMALL SUEB SINKING & TILING STAGE
29	NO.2 UPPER SOUND REFLECTION BOARD	93	SMALL SUEB SINKING & TILING STAGE
30	NO.2 DRAW CURTAIN	94	SMALL SUEB SINKING & TILING STAGE
31	NO.1 BORDER LIGHT BATTEN	95	SMALL SUEB SINKING & TILING STAGE
32	NO.1 SUSPENSION LIGHT BATTEN	96	SMALL SUEB SINKING & TILING STAGE
33	NO.16 FLY SET BATTEN	97	SMALL SUEB SINKING & TILING STAGE
34	PROSCENIUM REFLECTION BOARD	98	SMALL SUEB SINKING & TILING STAGE
35	NO.17 FLY SET BATTEN	99	SMALL SUEB SINKING & TILING STAGE
36	NO.18 FLY SET BATTEN	100	SMALL SUEB SINKING & TILING STAGE
37	NO.19 FLY SET BATTEN	101	SMALL SUEB SINKING & TILING STAGE
38	NO.2 DRAW CURTAIN	102	SMALL SUEB SINKING & TILING STAGE
39	NO.2 SUSPENSION LIGHT BATTEN	103	SMALL SUEB SINKING & TILING STAGE
40	NO.2 SUSPENSION LIGHT BATTEN	104	SMALL SUEB SINKING & TILING STAGE
41	NO.20 FLY SET BATTEN	105	SMALL SUEB SINKING & TILING STAGE
42	NO.21 FLY SET BATTEN	106	SMALL SUEB SINKING & TILING STAGE
43	NO.22 FLY SET BATTEN	107	SMALL SUEB SINKING & TILING STAGE
44	NO.23 FLY SET BATTEN	108	SMALL SUEB SINKING & TILING STAGE
45	NO.24 FLY SET BATTEN	109	SMALL SUEB SINKING & TILING STAGE
46	UPPER HORIZONTAL LIGHT BATTEN	110	SMALL SUEB SINKING & TILING STAGE
47	NO.25 FLY SET BATTEN	111	SMALL SUEB SINKING & TILING STAGE
48	NO.26 FLY SET BATTEN	112	SMALL SUEB SINKING & TILING STAGE
49	NO.1 DRAW CURTAIN (WHITE)	113	SMALL SUEB SINKING & TILING STAGE
50	HORIZONTAL CURTAIN (WHITE)	114	SMALL SUEB SINKING & TILING STAGE
51	HORIZONTAL CURTAIN (BLACK)	115	SMALL SUEB SINKING & TILING STAGE
52	NO.1 SIDE SOUND REFLECTION BOARD	116	SMALL SUEB SINKING & TILING STAGE
53	NO.2 SIDE SOUND REFLECTION BOARD	117	SMALL SUEB SINKING & TILING STAGE
54	NO.2 SIDE SOUND REFLECTION BOARD	118	SMALL SUEB SINKING & TILING STAGE
55	NO.2 SIDE SOUND REFLECTION BOARD	119	SMALL SUEB SINKING & TILING STAGE
56	NO.2 SIDE SOUND REFLECTION BOARD	120	SMALL SUEB SINKING & TILING STAGE
57	NO.2 SIDE SOUND REFLECTION BOARD	121	SMALL SUEB SINKING & TILING STAGE
58	NO.1 TOWER LIGHT	122	SMALL SUEB SINKING & TILING STAGE
59	NO.2 TOWER LIGHT	123	SMALL SUEB SINKING & TILING STAGE
60	NO.4 TOWER LIGHT	124	SMALL SUEB SINKING & TILING STAGE
61	NO.4 TOWER LIGHT		
62	NO.2 TOWER LIGHT		
63	NO.2 TOWER LIGHT		
64	NO.2 TOWER LIGHT		

TITLE
DATE
PRODUCTION
OTHER

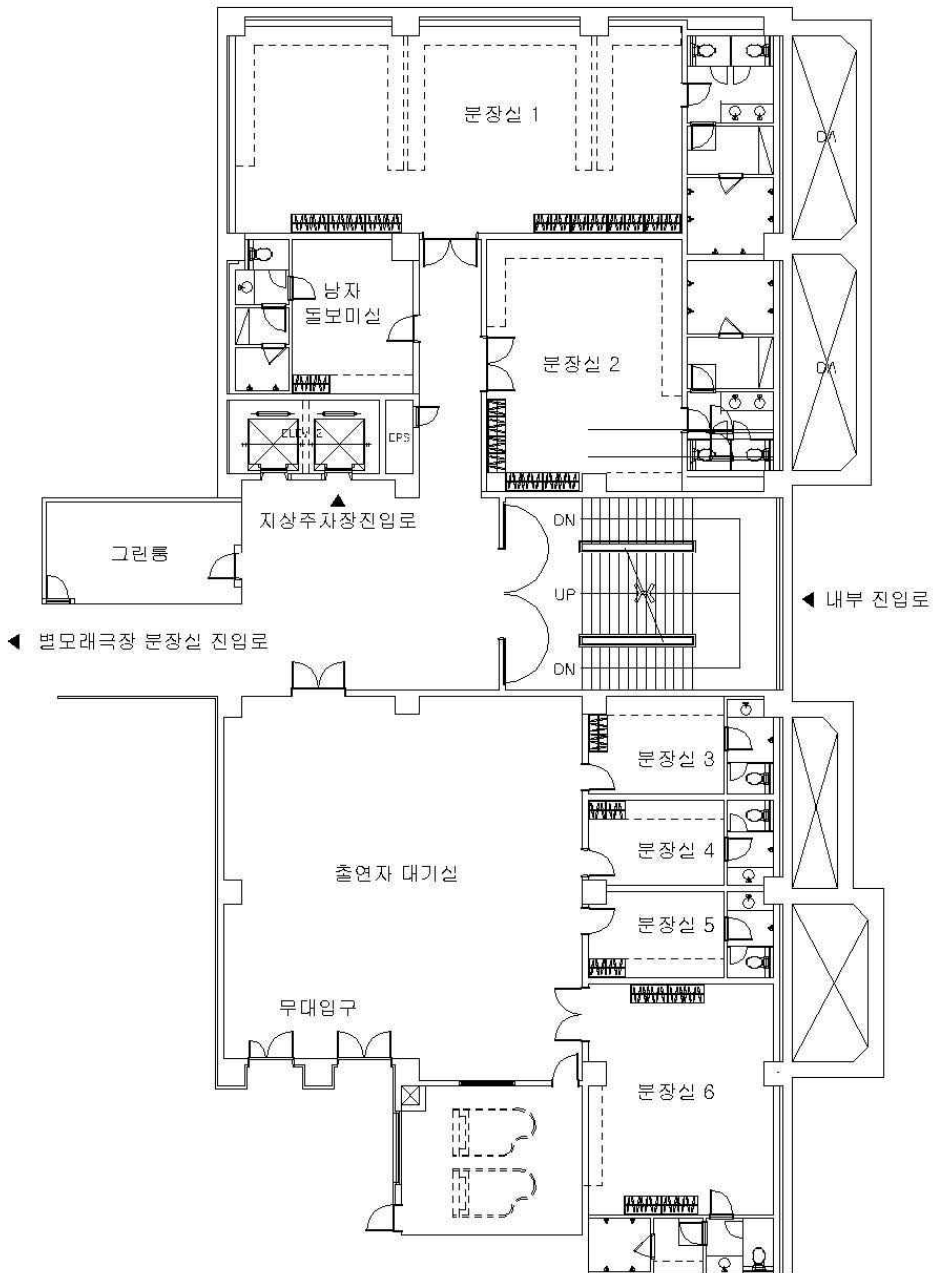


아름다운 나라 무대면도
본도: 1:200, 1:100, 1:50, 1:25, 1:10, 1:5, 1:2, 1:1

SCALE
DESIGNER
REMARK

1:130

어울림극장 분장실 배치도



Star & Sands Theater

TECHNICAL SPECIFICATIONS

SEATING CAPACITY

ORCHESTRA	362
THE DISABLED SEAT	4
TOTAL	366

STAGE DIMENSIONS

PROSCENIUM

WIDTH	13.5m
HEIGHT	5.4m

STAGE

TOTAL DEPTH	10.6m
WIDTH	28.2m
MAIN STAGE DIMENSIONS	13.2m(W) x 7m(D)

WINGS

SL PROSCENIUM EDGE TO SL WALL	7.9m
SR PROSCENIUM EDGE TO SR WALL	7.9m

GRID

GRID HEIGHT TO DECK 18.6m

GRID HEAVILY OBSTRUCTED WITH HOUSE LINESET RIGGING

MAX BATTEN "OUT" HEIGHT 13m

SIDE WAGON

Right and left on the stage, each the same size as main stage [6.6m(L) x 3.5m(D)]=4EA.

CARPENTRY

STAGE FLOOR

Constructed in compressed dried beech flooring and the color is black. The compressed level is 510Kg/Cm².

SOFT GOOD INVENTORY

DRAW CURTAIN Pair black cotton velour 18.5m(L) x 7.2m(H) (4) – Fix

BORDERS Pair black cotton velour 18.5m(L) x 2.4m(H) (4)

HORIZONTAL CURTAINS

Black 20m(L) x 8m(H) (1)

White 20m(L) x 8m(H) (1)

SCREENS SCREEN 12.5m(L) x 6m(H) (1)

ROLL SCREEN 6m(L) x 4.3m(H) (1)

STAGE RIGGING SYSTEM

SET BATTEN

There are total of 13 lineset for sets and has 250mm distance between each lineset.

The maxium load is 1,000Kg.

PROPS

PIANO

Steinway D-274 grand piano 1ea

PIANOS CARRIER

Steinway D-274 carrier 1ea

DANCE FLOOR CARRIER

8roles per 1carrier 1ea

DRESS ROOM

LOCKER

All dressing rooms have cardkey auto lock system.

ROOMS

There are three dressing rooms on the left side of the stage, and all dressing rooms are equipped with private bathrooms and showers.

Floor plans for flooring are attached at the back.

In the No. 1 dressing room shower room, there are drum washing machine (22Kg, 127L) and dryer (14Kg).

SOUND

POWER

For sound only, 3 phase 4 line 200 amps power available.

CONTROL CONSOL SYSTEM

F.O.H (1) DIGICO SD8 (

MAIN SPEAKER SYSTEM

Main Left, Right (4) MAYER CQ2
Sub Woofer (2) MAYER 650-P
Speaker controller (1) MAYER GALILEO408

MONITOR SPEAKER SYSTEM

Monitor Speaker (2) JBL MP-212
(2) JBL MP-415
Monitor Amplifier (2) Crown CL4

PLAYER & RECORDER SYSTEM

CD Player (1) DN-4500
CD Recorder (1) TASCAM CDRW-2000
MD Player & Recorder (1) TASCAM MD-801Rmk
DVD Recorder (1) Blackmagic Design H.264 Pro Recorder – I MAC

WIRELESS MICROPHONE SYSTEM

Receiver (4) SENNHEISER EM-500
(4) SENNHEISER EM-2050
Beltpack Transmitter (4) EW-500
(8) SK-2000-CW

Handheld Transmitter (2) SKM-500

INTERCOM SYSTEM

wired intercom (4) Clear Com RS-501

wireless intercom (4) Clear Com BP-410

FRONT PROJECTION SYSTEM

LCD Projector (1) Panasonic PT-MZ10KLB/W

CAMERA SYSTEM

Center (1) Panasonic PTZ Camera AW-HE130W

LIGHTING

DIMMERS

TOTAL 288 DIMMERS (ETC)

Dimmer : 234 Circuit / 5Kw

Remote Direct : 42 Circuit / 5Kw

Direct : 2 Circuit / 5Kw

CONTROL CONSOLE

(2) ETC : Insight III

LIGHT BATTEN

(1) BALCONY (9 Circuit)

(1) CEILING (36 Circuit, RD 2 Circuit)

(1) APRON (18 Circuit, RD 4 Circuit)

(2) BORDER (18 Circuit)

(3) SUSPENSION LIGHT (24 Circuit, RD 6 Circuit)

(1) HORIZONT LIGHT (8 Circuit)

(2) FRONT SIDE (8 Circuit, RD 1 Circuit)

LADDERS

(1) WS - 6.2 8M(26feet)

LIGHTING INSTRUMENT INVENTORY

Follow Spot Light

(2) USHIO UFS-1000A 1Kw

Profile Spot Light

(44) Source Four 15~30° 750w

(20) Source Four 25~50° 750w

(5) Source Four 19° 750w

(30) Source Four 36° 750w

(3) Source Four 50° 750w

Fresnel Spot Light

(50) MARUMO FQH 1.5Kw

Par Light

(50) Par Light 64 1Kw

(50) Par Light 46 250w

(10) Par Light bank 250w

Moving Light

(12) MAC 2000 profile 1.2Kw

Cyclorama Light

(7) ACP 1004H 4 Lamp 1250w

(176) KOREA (Upper) 500w

(18) KOREA 8 Lamp (Lower) 300w

Strobe Light (16) Data Flash F-1000, 1.5Kw

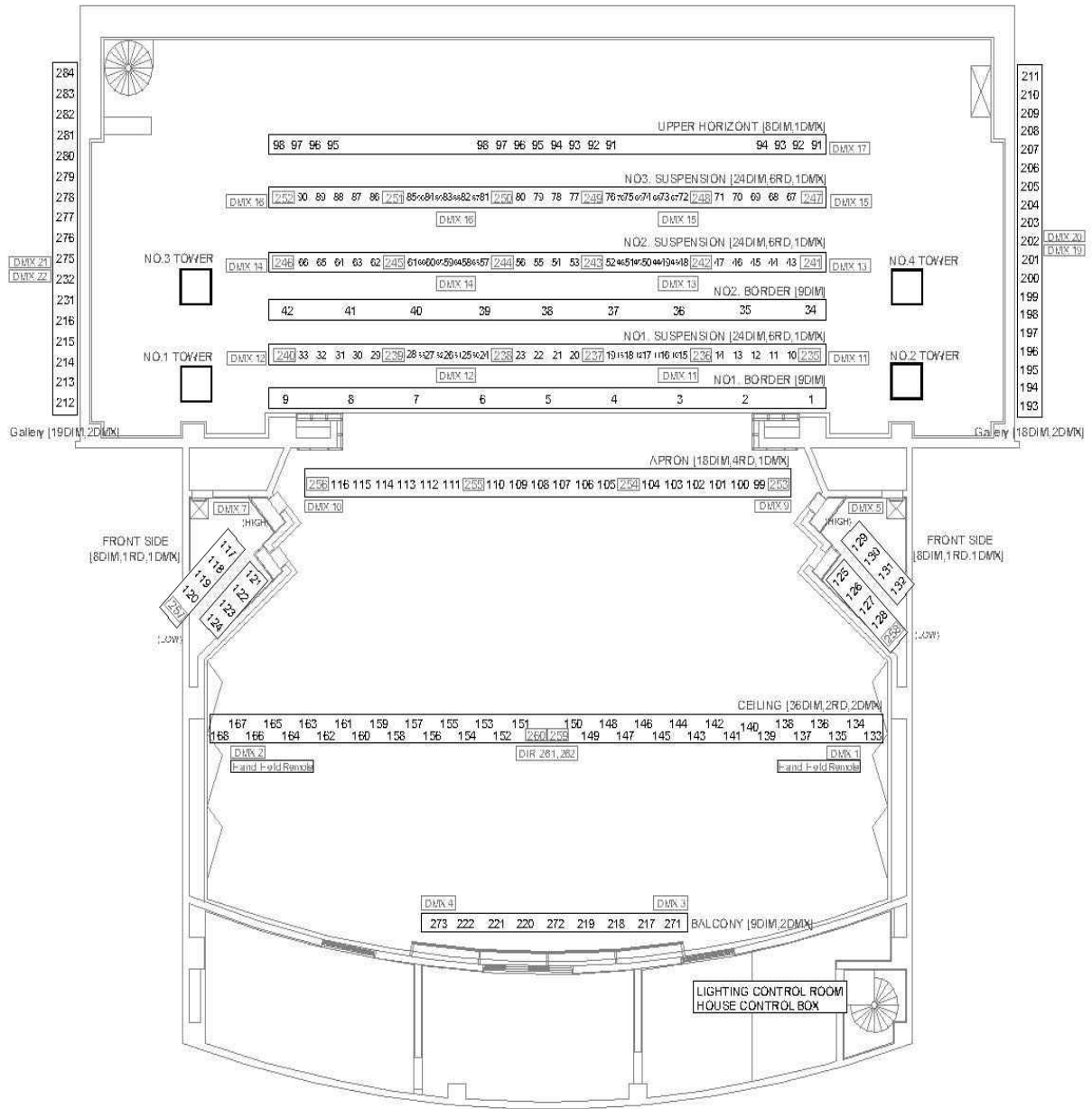
UV Light (4) LT-404F, 400w

Fog Machine (6) F-100

Hazer (3) UNIQUE

Dry Ice Machine (4) AQUA 3300

Fan	(4)	Martin DMX AF-1, AF-2
Barn Door	(20)	8 inch MARUMO Barn Door
Iris	(60)	Source Four
Top Hat	(40)	Source Four Standard (5.5inch)
	(30)	Source Four Zoom (6.5inch)
	(40)	Source Four Zoom (6.5inch, Half)
	(23)	Par64 (8inch)
Stand	(10)	short stand (10cm)
Boom Stand	(16)	boom base
	(16)	pipe (3M)
	(16)	pipe (2M)
	(13)	side arms (Altman 12")
Movable Tower	(2)	movable tower 2M



House : 223 ~ 230

Byeolmorae Theater Circuit Plan

DIMMER : 5KW

SYMBOL	N A M E
1-666	DIMMER (230V,5KW)
1	REBOTE DIRECT (230V,5KW) (Relay, module)
DIR	DIRECT (230V,5KW)
DMX	DMX 512 - 5PIN (Famaki)
1	House Light

별모래극장 분장실 배치도

